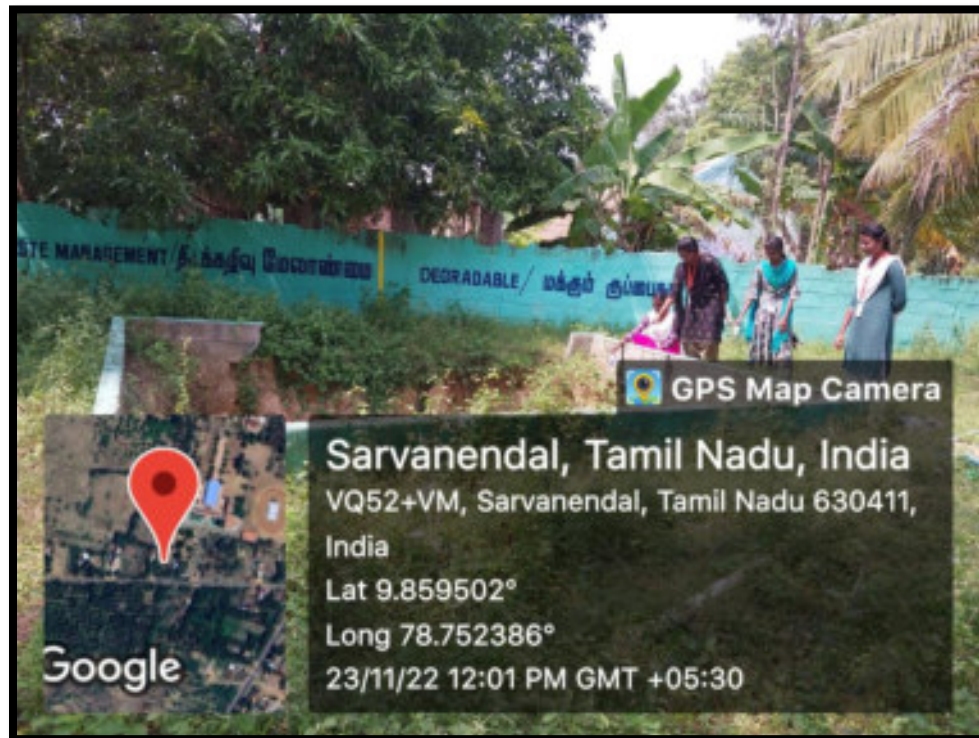
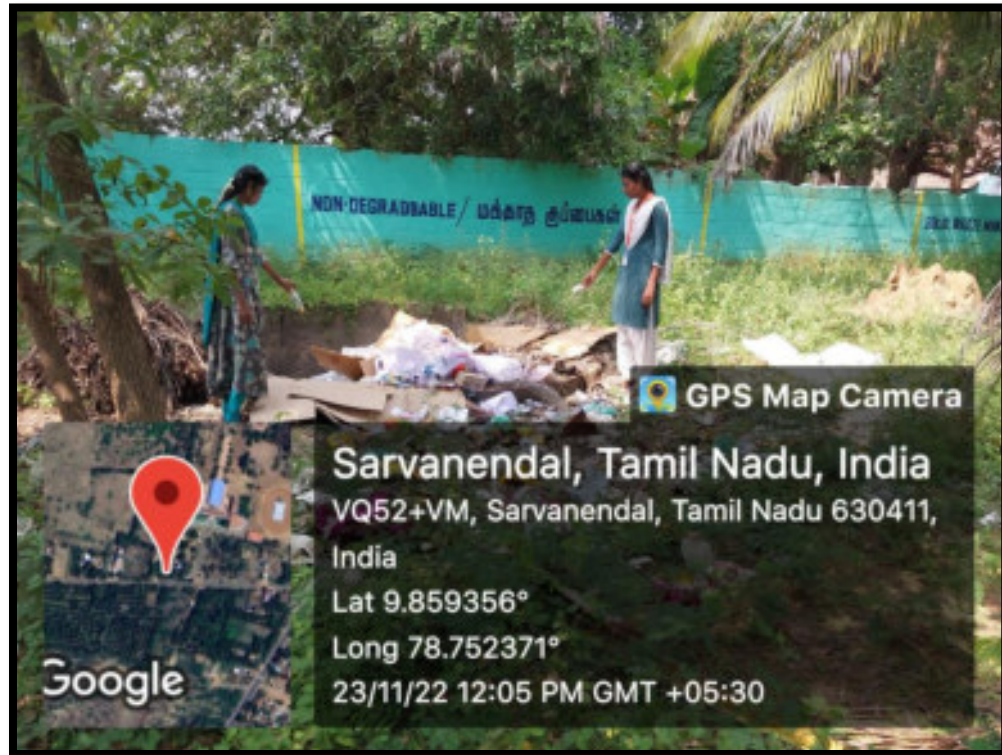


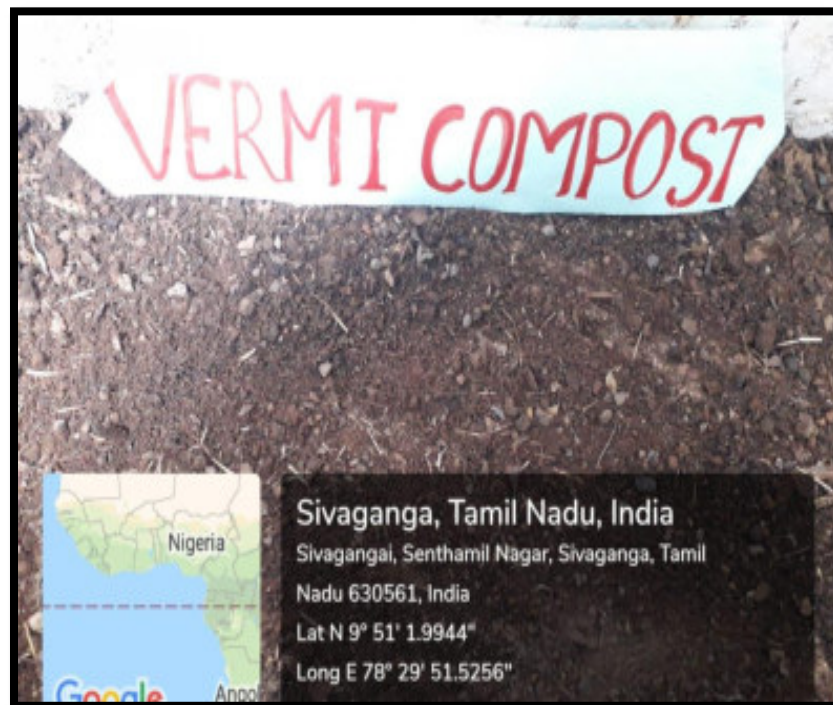


## SOLID WASTE MANAGEMENT





## VERMI COMPOST





## VERMI CULTURE





## DUSTBIN IN THE CLASS ROOMS

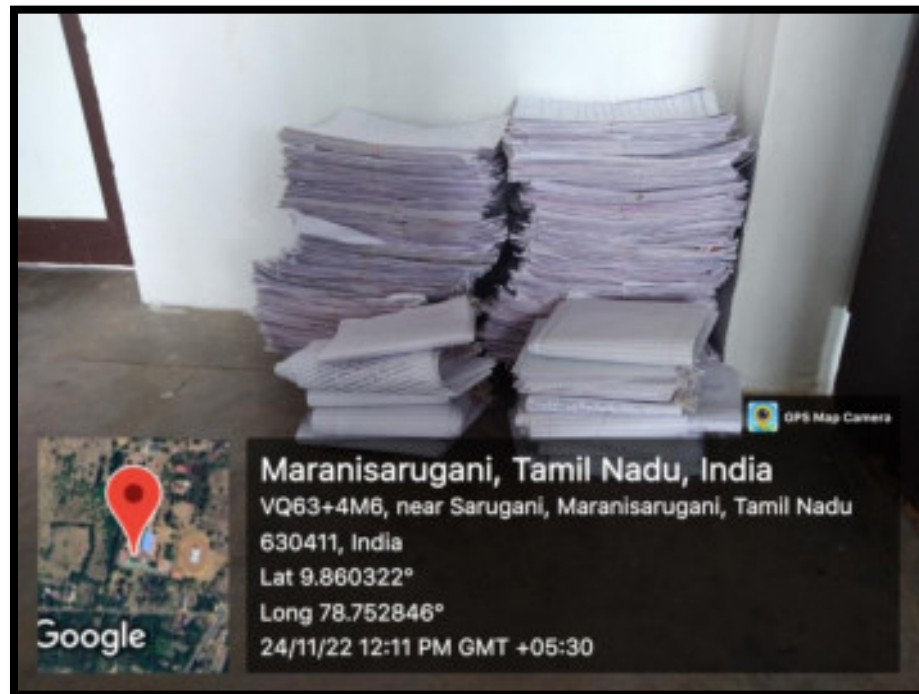
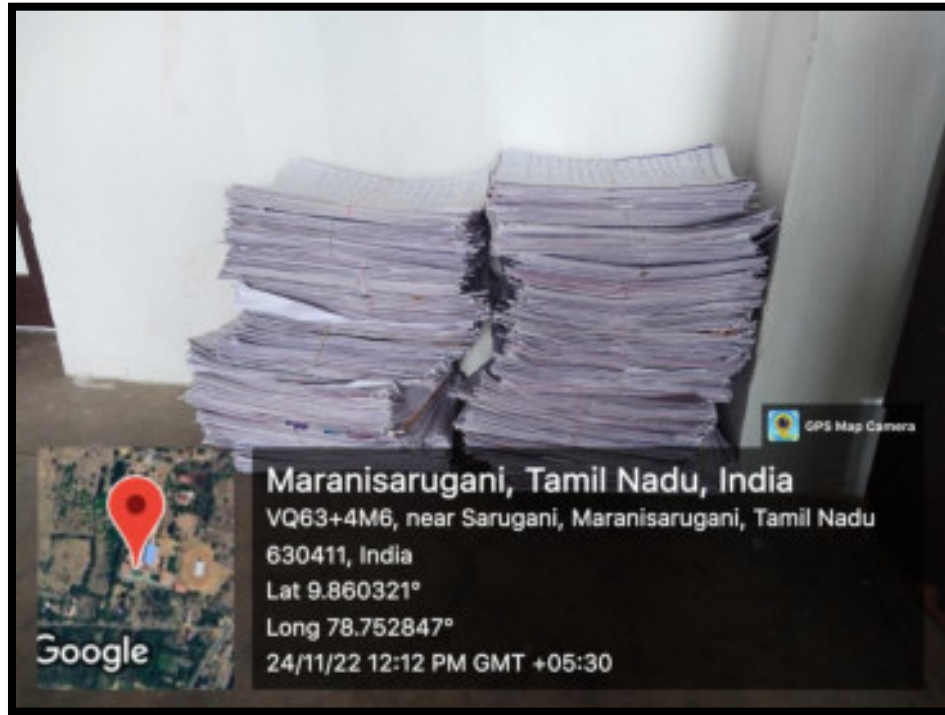


## DUSTBIN IN THE HOSTEL





## OLD ASSIGNMENT AND ANSWER SCRIPT





## LIQUID WASTE MANAGEMENT





## BIOMEDICAL WASTE MANAGEMENT

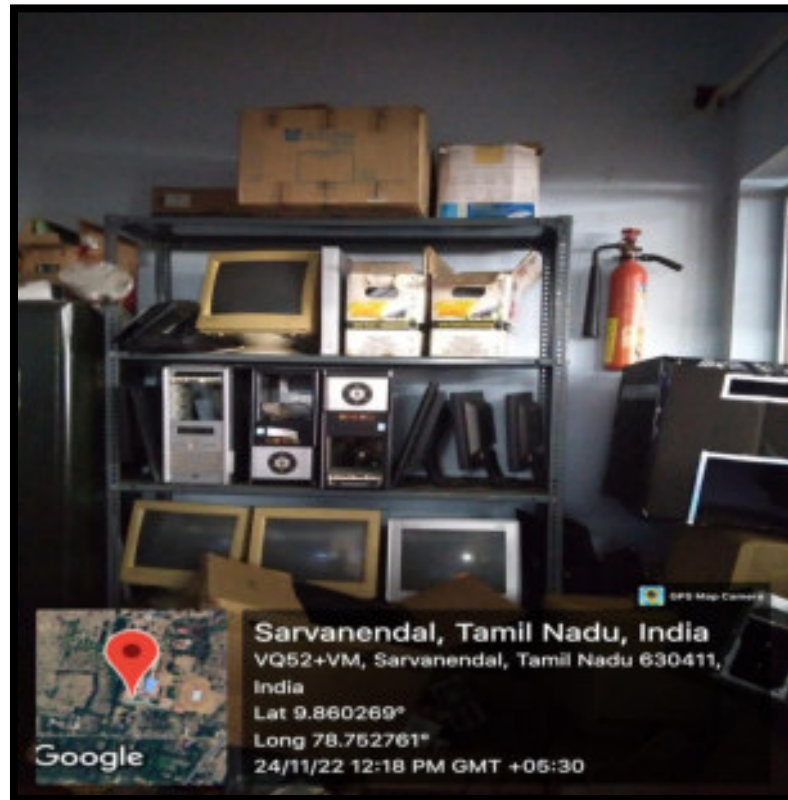




## 7.1. Institutional Values and Social Responsibilities

### 7.1.3 Degradable and Non-degradable Waste

# E- WASTE MANAGEMENT







## HAZARDOUS CHEMICAL MANAGEMENT

